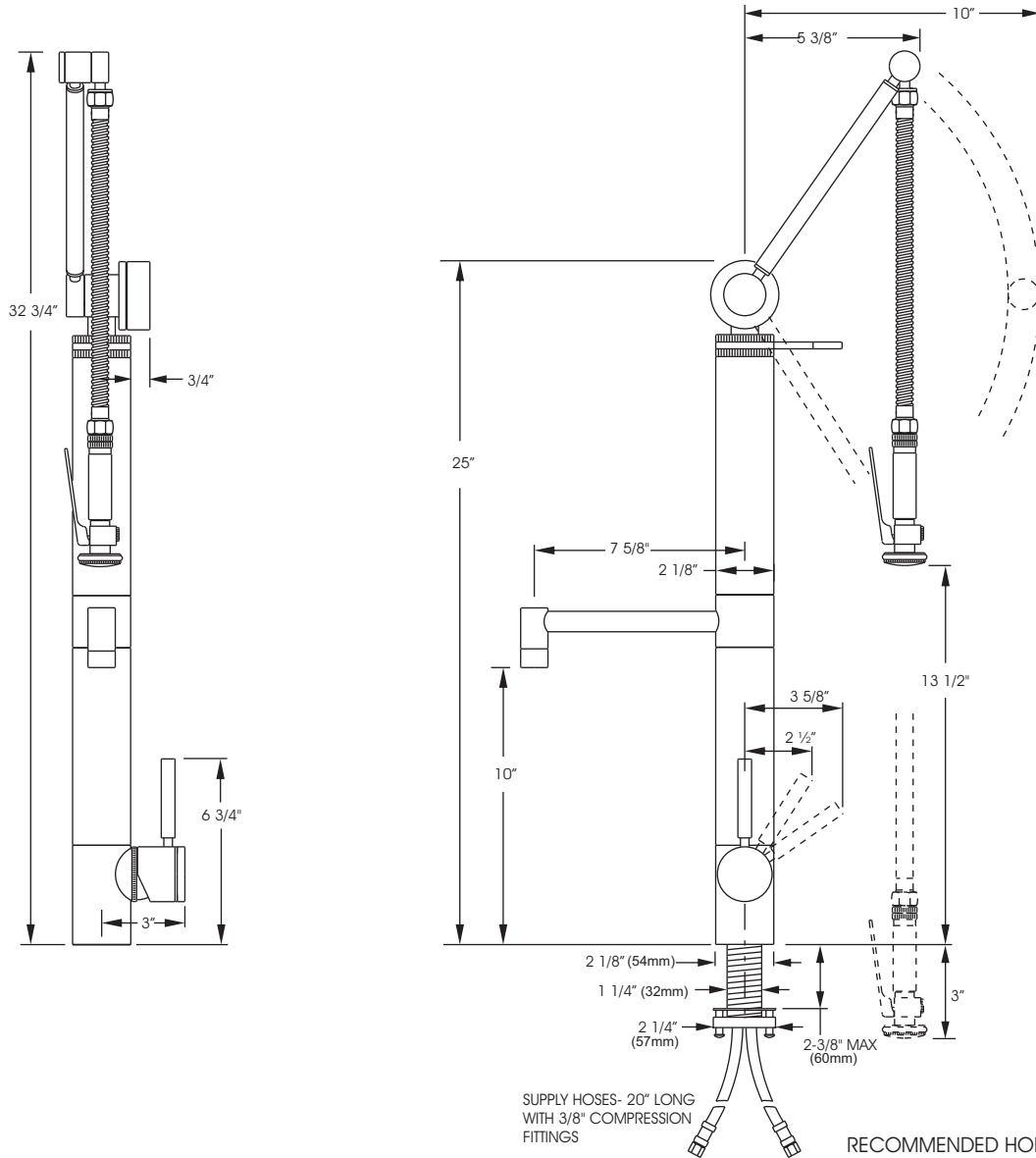




26790 Madison Ave.
 Murrieta, CA 92562
 888-304-0660
 www.waterstoneco.com

ITEM NO:	
	3700
STYLE:	HUNLEY GANTRY®
INTENDED USE:	KITCHEN FAUCET / PRE-RINSE
CUSTOMER NAME:	JOB NO:

DIMENSIONS MAY VARY AND ARE SUBJECT TO CHANGE. NO RESPONSIBILITY IS ASSUMED FOR USE OF SUPERCEDED OR VOIDED DATA.



Technical Specifications:

- Solid brass or Stainless Steel construction.
- Ceramic disk valve cartridge.
- Removable Hot/Cold indicator ring.
- 2.2 gpm maximum flow rate with aerated tip.
- Lever handle.
- Handle adjusts for clearance from backsplash.
- Reinforced braided connection hoses.
- Adjustable Teflon® "Friction Lock" aids handle feel and prevents sag.
- Articulating spout with 12" reach.
- Spout swivels 360 degrees.

Codes/Standards Applicable

Specified model meets or exceeds the following:

- ASME A112.18.1
- CSA B125.1
- NSF 61

DATE: 1-11-08



Made in the U.S.A.