



### Codes/Standards Applicable

- ANSI Z124.1.2
- CSA B45 Series

### Whirlpool Bathtubs:

- UL1795
- ASME A112.19.7
- CSA C22.2 No. 218.2
- CSA B45.10

### KEY BENEFITS

- Ample deck space for faucet installation
- Flexible design to fit eclectic or contemporary design
- Drain and overflow are hidden by the skirt
- Easy to install
- Air massage systems optional

### STANDARD FEATURE(S)

- Easy to install
- Easy to clean White acrylic

### COMMON OPTIONS

- 8-in. widespread lavatory (Fjord faucet)
- Bathtub faucet with hand shower Fjord
- Flexible main hose 15 ft for electronic control
- Metal trim kit for Aerofeel
- [Two chromatherapy lights](#)
- Waste and overflow
- Water pipe inlets Fjord
- White foam cushion

### MASSAGE SYSTEM(S)

- [Aerofeel](#)

## Colors

### Standard Acrylic Colors



Colors shown are for reference purposes only and are subject to change without notice. Exact matches are not possible with your monitor display or printing method used.

## Model Specifications, Options and Accessories

<input checked="" type="checkbox"/>	No	Model	Dimensions in. (mm)	Approx. Weight lb (kg)	PKG ft3 (m3)
<input type="checkbox"/>	105359-000	BATHTUB	66 X 36 X 24	149	36.8
Water Capacity: Minimum: 58 gal. Maximum: 76 gal.					

### Air System

<input checked="" type="checkbox"/>	No	Description	Dimensions in. (mm)	Approx. Weight lb (kg)	PKG ft3 (m3)
<input type="checkbox"/>	105359-055	AEROFEEL	66 X 36 X 24	174	36.8

### Common Options

✓	No	Description	Dimensions in. (mm)	Approx. Weight lb (kg)	PKG ft3 (m3)
<input type="checkbox"/>	OPT 10054	Two chromatherapy lights (factory installed)	2 3/8	2.5	N/A
<input type="checkbox"/>	OPT 20140-001	Waste and overflow (included in product packaging) Available colors: White (001), Bone (004), Biscuit (007), Chrome (084), Polished Brass (085) and Brushed Nickel (105)	N/A	N/A	
<input type="checkbox"/>	OPT 20140-004				
<input type="checkbox"/>	OPT 20140-007				
<input type="checkbox"/>	OPT 20140-084				
<input type="checkbox"/>	OPT 20140-085				
<input type="checkbox"/>	OPT 20140-105				

### Air System Options

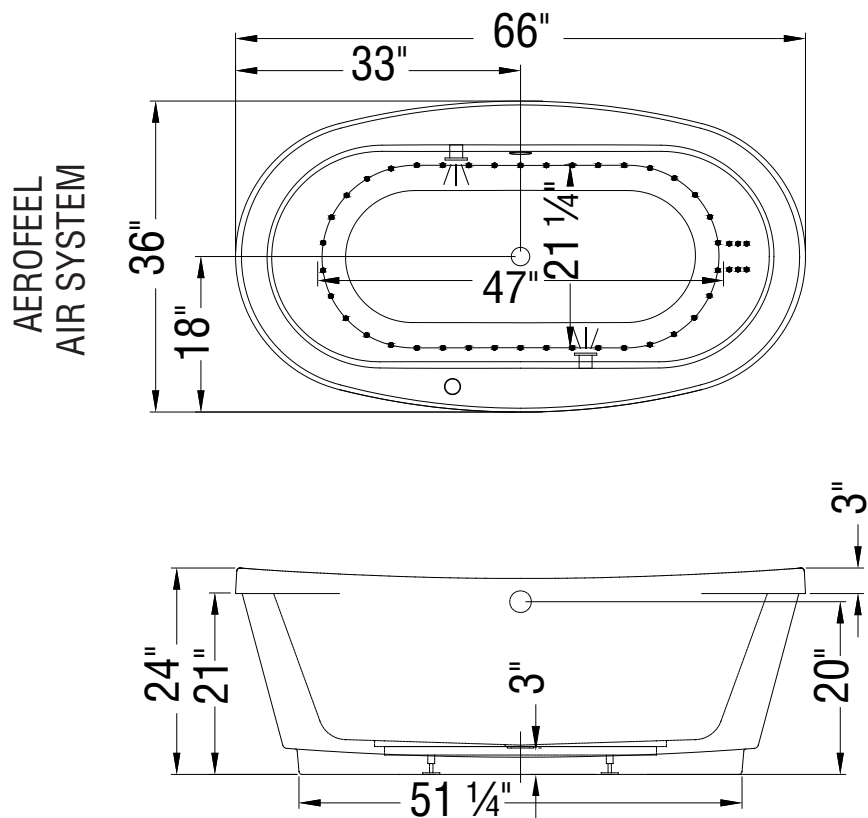
<input checked="" type="checkbox"/>	No	Description	Dimensions in. (mm)	Approx. Weight lb (kg)	PKG ft3 (m3)
<input type="checkbox"/>	OPT 10119-084	Metal trim kit for Aerofeel electronic control only (factory installed) Available colors: Chrome (084), Polished Brass (085) and Brushed Nickel (105)	N/A	1.5	N/A
<input type="checkbox"/>	OPT 10119-085				
<input type="checkbox"/>	OPT 10119-105				

## Faucet


✓	No	Description	Dimensions in. (mm)	Approx. Weight lb (kg)	PKG ft3 (m3)
<input type="checkbox"/>	10011000-084	Bathtub faucet with hand shower Fjord	N/A		
<input type="checkbox"/>	10011000-105	Available colors: Chrome (084) and Brushed Nickel (105)			
<input type="checkbox"/>	10011001-084	Water pipe inlet Fjord	3/4 X 29		
<input type="checkbox"/>	10011001-105	Solid Brass pipe 3/4-in. 12-in. male Nut kit and floor flange included Available colors: Chrome (084) and Brushed Nickel (105)			
<input type="checkbox"/>	200025-000-084	8-in. widespread lavatory Brass pop-up drain assembly included	N/A		
<input type="checkbox"/>	200025-000-105	1/4 turn ceramic cartridge Available colors: Chrome (084) and Brushed Nickel (105)			

## Accessories

✓	No	Description	Dimensions in. (mm)	Approx. Weight lb (kg)	PKG ft3 (m3)
<input type="checkbox"/>	10004306-001	White foam cushion with 2 suction pads (sold separately)	11 1/2 X 6 1/2 X 1	1	0.27
<input type="checkbox"/>	10019708	Flexible Main Hose (15-ft. extension) for Electronic Control Air Massage - Kit (sold separately)	N/A	2.5	0.89
<input type="checkbox"/>	10025081-001	Waste and overflow Available colors: White (001), Bone (004), Biscuit (007), Chrome (084), Polished Brass (085) and Brushed Nickel (105)		N/A	N/A
<input type="checkbox"/>	10025081-004				
<input type="checkbox"/>	10025081-007				
<input type="checkbox"/>	10025081-084				
<input type="checkbox"/>	10025081-085				
<input type="checkbox"/>	10025081-105				



( • ) : Indicates Aerofeel airjets positioning

(  ) : Indicates optional chromatherapy light positioning

All dimensions are approximate and subject to change without prior notice.  
Please refer to website at [www.maax.com](http://www.maax.com) before installing unit.

<b>Canada</b>	Alberta British Columbia Manitoba New Brunswick Newfoundland Nova Scotia Northwest Territories Ontario Prince Edward Island Quebec Saskatchewan Yukon Territory
<b>United States</b>	Alabama Alaska Arizona Arkansas California Colorado Connecticut Delaware District of Columbia Florida Georgia Hawaii Idaho Illinois Indiana Iowa Kansas Kentucky Louisiana Maine Maryland Massachusetts Michigan Minnesota Mississippi Missouri Montana Nebraska Nevada New Hampshire New Jersey New Mexico New York North Carolina North Dakota Ohio Oklahoma Oregon Pennsylvania Rhode Island South Carolina South Dakota Tennessee Texas Utah Vermont Virginia Washington West Virginia Wisconsin Wyoming
<b>International</b>	Jamaica Switzerland Korea China Taiwan Pilipinas Vietnam Malaysia Singapore Egypt Kuwait Dubai Qatar Saudi Arabia Bermuda Turks & Caicos Dominican Republic Panama Costa Rica Guatemala Colombia

Here are the electrical specifications for all MAAx Collection bathtub therapeutic systems offered in the United States.

**PLEASE NOTE THAT SOME SYSTEMS MAY NOT BE AVAILABLE ON THE PRODUCT YOU HAVE SELECTED.**

Please refer to the *Common Options* and *Massage System(s)* sections for more details.

HYDROFEEL	
<b>Pump:</b> Requires a dedicated circuit protected by a Class A GFCI. This circuit can be shared with these two options: Chromatherapy and Ambiance Set (Urban® Water Cascade)	
<b>Heater:</b> Requires a dedicated circuit protected by a Class A GFCI.	
Pump	1.5HP / 120V / 12.5A / 60Hz
REST™ Pump Option	1HP / 120V / 9.4A / 60Hz
Heater	1500W / 120V / 12.5A / 60Hz

HYDROMAX	
<b>Pump:</b> Requires a dedicated circuit protected by a Class A GFCI. This circuit can be shared with Chromatherapy (option).	
<b>Pump 2 (for large bathtubs):</b> Requires a dedicated circuit protected by a Class A GFCI.	
<b>Heater:</b> Requires a dedicated circuit protected by a Class A GFCI.	
Pump	1.5HP / 120V / 12.5A / 60Hz
REST™ Pump Option	1HP / 120V / 9.4A / 60Hz
Heater	1500W / 120V / 12.5A / 60Hz

AEROFEEL	
<b>Blower:</b> Requires a dedicated circuit protected by a Class A GFCI. This circuit can be shared with these two options: Chromatherapy and Ambiance Set (Urban® Water Cascade).	
Blower	1.4HP / 120V / 9.5A / 60Hz

COMBINED HYDROFEEL / AEROFEEL	
<b>Blower:</b> Requires a dedicated circuit protected by a Class A GFCI.	
<b>Pump:</b> Requires a dedicated circuit protected by a Class A GFCI. This circuit can be shared with these two options: Chromatherapy and Ambiance Set (Urban® Water Cascade).	
<b>Heater:</b> Requires a dedicated circuit protected by a Class A GFCI.	
Blower	1.4HP / 120V / 9.5A / 60Hz
Pump	1.5HP / 120V / 12.5A / 60Hz
REST™ Pump Option	1HP / 120V / 9.4A / 60Hz
Heater	1500W / 120V / 12.5A / 60Hz

COMBINED HYDROMAX / AEROFEEL	
<b>Blower:</b> Requires a dedicated circuit protected by a Class A GFCI.	
<b>Pump:</b> Requires a dedicated circuit protected by a Class A GFCI. This circuit can be shared with Chromatherapy (option).	
<b>Pump 2 (for large bathtubs):</b> Requires a dedicated circuit protected by a Class A GFCI.	
<b>Heater:</b> Requires a dedicated circuit protected by a Class A GFCI.	
Blower	1.4HP / 120V / 9.5A / 60Hz
Pump	1.5HP / 120V / 12.5A / 60Hz
REST™ Pump Option	1HP / 120V / 9.4A / 60Hz
Heater	1500W / 120V / 12.5A / 60Hz

CHROMATHERAPY	
Requires a dedicated circuit protected by a Class A GFCI.	

AMBIANCE SET (URBAN® WATER CASCADE)	
Requires a dedicated circuit protected by a Class A GFCI. This circuit can be shared with Chromatherapy (option).	

### Installation Note

Install this product according to the *Installation Guide*.

All electrical wiring must be done per national/local electrical codes.