

LB9030 SPECIFICATIONS

coco single-hole wall mounted bidet

FEATURES:

- Streamlined, one piece wall mounted design with overflow
- Vitreous china
- Standard two-bolt installation system
- Skirted styling with concealed drain for easy cleaning
- ADA compliant when installed at the required height of 17" (430mm) - 19 1/4" (489mm)

SPECIFICATIONS:

Drain Diameter:	Ø1 7/8" (Ø45mm)
Warranty:	One Year Limited Warranty
Material:	Vitreous China
Shipping Weight:	33lbs. (15kg)*
Shipping Dimensions:	(LWH) 22 3/4" x 15 1/2" x 13" (580mm x 395mm x 330mm)

Finishes:

White

ACCESSORIES:

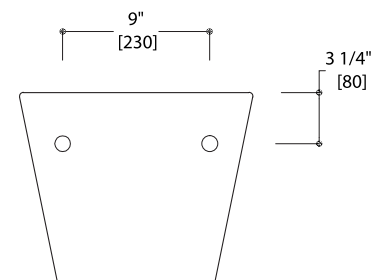
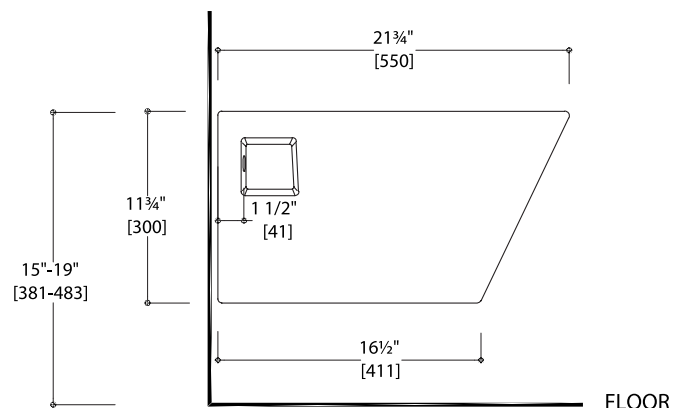
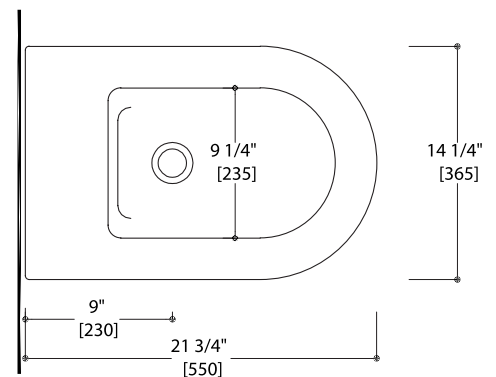
Geberit carrier 111.520.00.1 (not included)
 Bidet mixer TSU611 & TSP611 available (sold separately)
 LW6030 coordinating toilet (sold separately)

CODES / STANDARDS APPLICABLE:

- Meets or exceeds ANSI / ASME standard A112.19.2 and CAN / CSA B 45 requirements
- ASME A112.19.2.2003
- IAPMO / UPC / cUPC
- ASME A112.19.5-2005 / CSA B125.3-2005
- CSA B45.0; CSA B45.1

INSTALLATION NOTES:

Install this product according to the installation guide.
 Our products must be installed by certified professionals only.



*Approximate measurements for comparison only.
 Note: These dimensions and specifications are subject to change without notice.