

GENERAL SPECIFICATIONS:

Tub Size	67" x 40" x 19.5"
Bathing Well	length: 62" top / 49" bottom width: 38" top / 22.25" bottom
Soaker Weight	200 lbs / 90.72 kg
Maximum Fill	90 gal to overflow
Undermountable	No

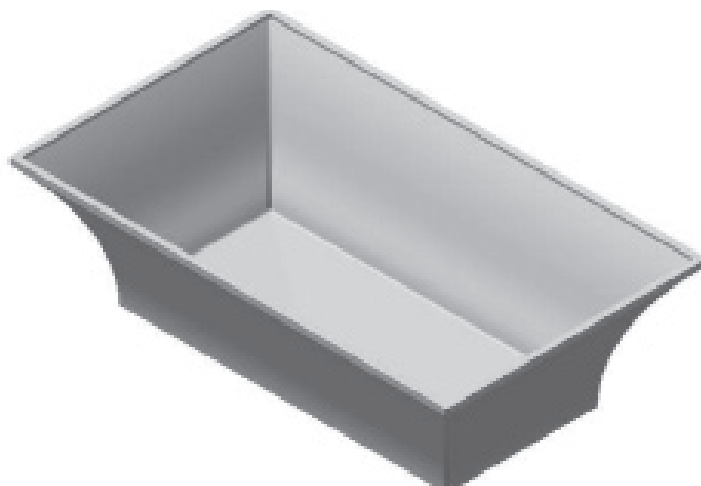
CSA Certified C/US; NAHB Certified; ANSI Z124.1

NOTE: Filling this tub to the maximum may require an above average size or dedicated water heater.

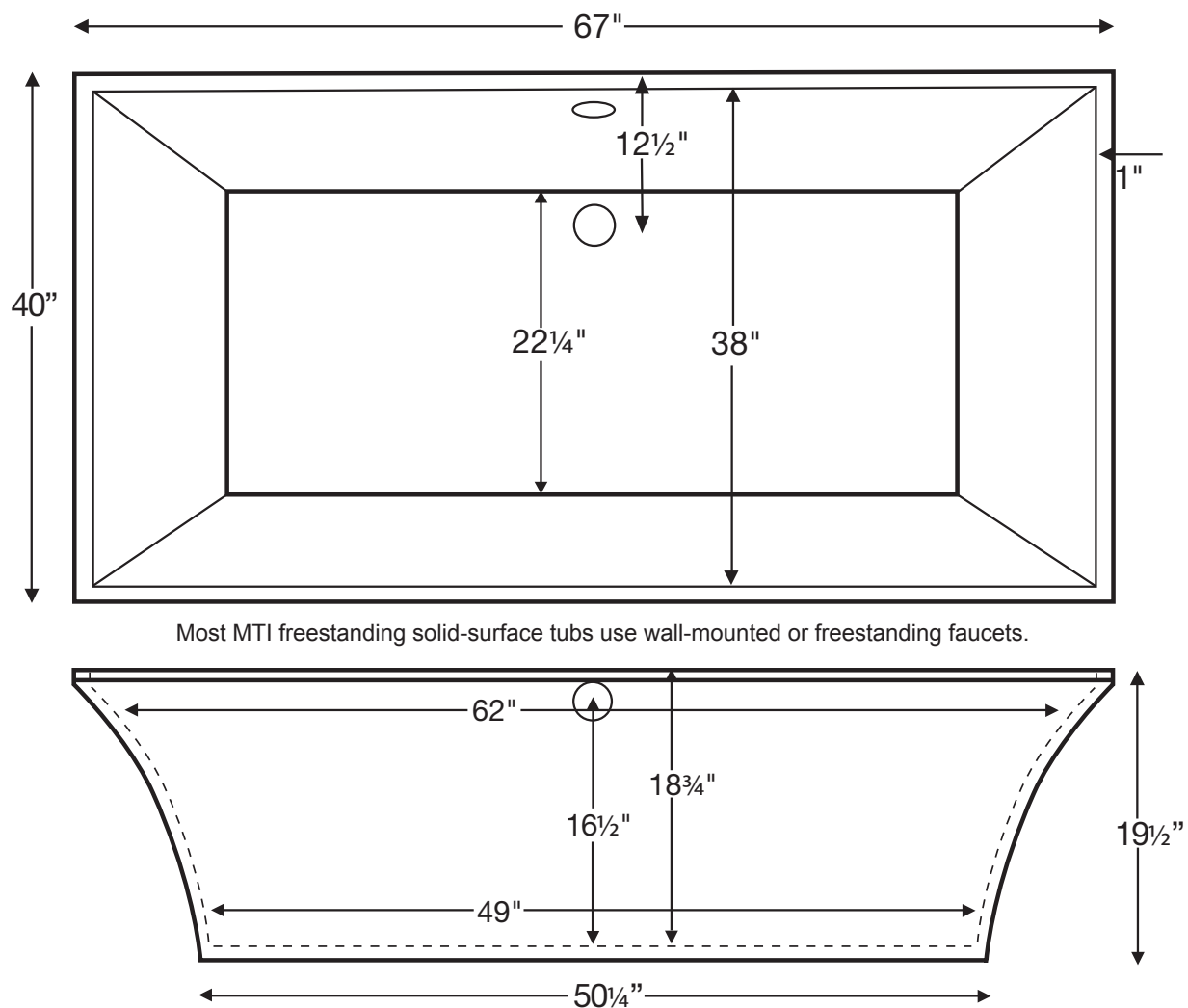
NOTE: Not recommended as a tub / shower combination.

Intarcia MTCT-137A

67" x 40" x 19.5"



Freestanding Tub



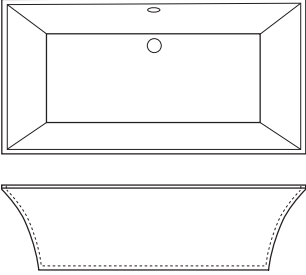
Most MTI freestanding solid-surface tubs use wall-mounted or freestanding faucets.

Measurements are $\pm 1/2"$ and are subject to change without notice.
Data herein supersedes all previous prior to publication date shown below.



Intarcia MTCT-137A

67" x 40" x 19.5"

Soaker	Soaker (S137A)	
	Soaker with exposed square Toe-Tap drain kit included in Chrome	
	\$9,999	

COLORS

Standard: White or Biscuit, matte finish

Optional: White or Biscuit, gloss finish
Osprey or Raven, gloss finish

Additional Colors available for projects only. Please call.

N/C
add \$1,020
add \$1,199
N/A
\$419
\$659
\$1,249
\$1,799
\$1,549
STD
\$75
\$500
\$100
\$116

OPTIONS

- Quick Ship/Priority (QSPRI)
- Routed Channel on Tub without Inlay (RCT)
- Routed Channel on Tub with Cherry Wood Inlay (RCTWI)
 - Choose From the Following Inlay Finishes, which co-ordinate with MTI hand-crafted bath furniture (see Sec. J):

Silver Fern	Medium Walnut Stain
Rivera Cream	Ebony Stain
Antique Black	Dark Walnut Stain
Powder White	Tavern Red
Fossil	Drift Wood
- (Note: Inlay can be finished to match any Benjamin Moore color available. Please specify model number of paint when placing order.)
- Routed Channel on Tub with Rubinet® Solid Brass Inlay
 - Available in the following finishes:

Chrome (RCTRC)	\$1,249
Gold (RCTRG)	\$1,799
Other Finishes (RCTRO)*	\$1,549
 - (*Please specify finish below when ordering):

Polished Nickel	Oil Rubbed Bronze
Bright Brass	Tuscan Brass
Satin Nickel	Matte White
Satin Brass	White
Satin Chrome	Natural Cream
Antique Brass	Matte Black
Antique Copper	Black
Red	Aqua
- (Note: Lead time 6-8 weeks on ALL finishes except for Chrome and Satin Nickel.)
- Waste & Overflow Kits
 - Solid-Surface Overflow Chrome (DKMQC)
 - Solid-Surface Overflow Brushed Nickel Upcharge (DKMQBN)
 - Solid Surface Overflow Special Finish Upcharge (DKMQSF)
- Pillows (see p C-12)
 - Soft "Jelly Bean" Pillow (PIJB)
 - Lounge Pillow (PIL)