

**GENERAL SPECIFICATIONS:**

<b>Tub Size</b>	66" x 35.75" x 23"
<b>Bathing Well</b>	length: 57" top / 46" bottom width: 28" top / 24" bottom depth at overflow: 16.75"
<b>Soaker Weight</b>	121 lbs / 54.93 kg
<b>Maximum Fill</b>	87 gal to overflow
<b>Undermountable</b>	No

NOTE: Filling this tub to the maximum may require an above average size or dedicated water heater.

NOTE: Not recommended as a tub / shower combination.

**ELECTRICAL SPECIFICATIONS:**

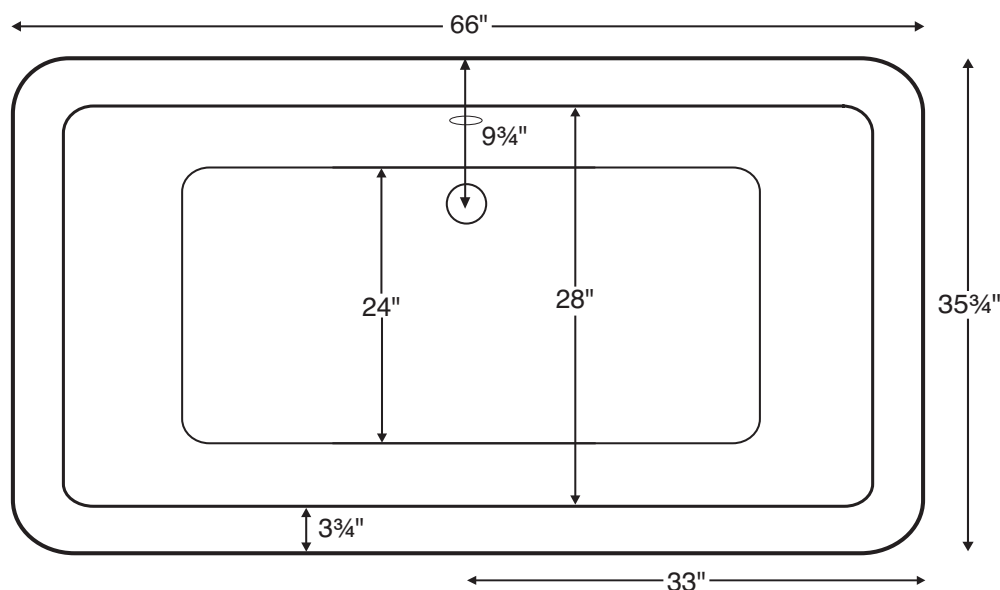
<b>Required Electrical Service</b>	110 Volt
<b>Air Bath Packages</b>	1-15 amp GFCI

CSA Certified C/US; NAHB Certified; ANSI Z124.1 for plastic tubs and ANSI 112.19.7 for whirlpool components.

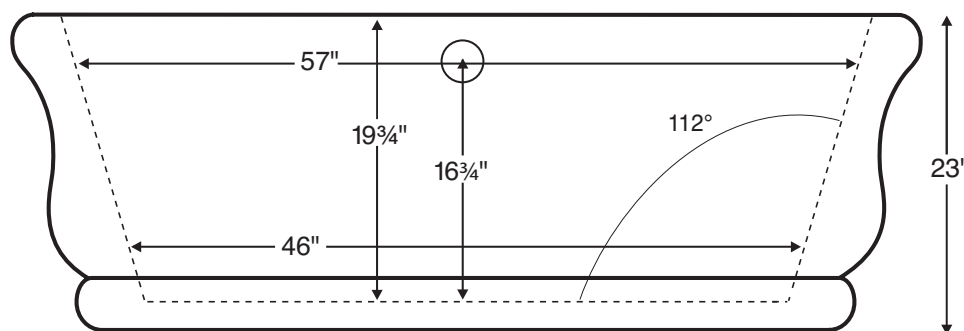
NOTE: See electrical specifications page for electrical requirements of options.

**Parisian™ MTDS-146****66" x 35.75" x 23"**

Freestanding Tub



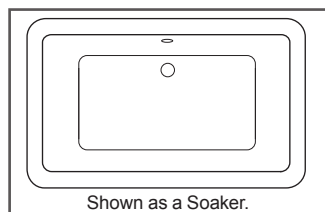
Requires use of a wall-mounted or freestanding tub filler. The drain and overflow assembly is concealed between the walls of the tub, eliminating the need for an exposed drain kit.



Before ordering or installing, please consider future access to equipment.

Measurements are  $\pm 1/2"$  and are subject to change without notice.  
Data herein supersedes all previous prior to publication date shown below.

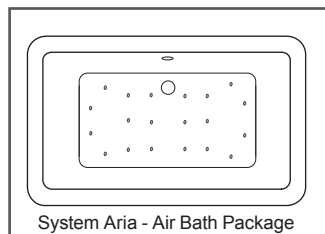




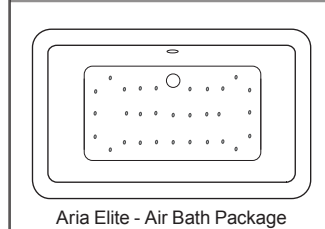
Soaker	
<b>Soaker</b> Soaker with internal pre-leveled foam base and Toe-Tap drain kit in chrome (see Tub Options below for other finishes).	
<b>Part # S146</b>	<b>\$7,228</b>

**IMPORTANT:**  
 There is no access panel installed on this tub.

To facilitate the installation process, overflow assembly is pre-installed at the factory. Drain is included with the tub for on-site installation. Select finish from those listed below. Must specify at the time of order. Price of drain is included in the Hydrotherapy Packages to the left.



Air Bath Packages	
<b>System Aria Bath</b> 20 air jets, heated air blower, internal pre-leveled foam base Toe-Tap drain kit in chrome (see Tub Options below for other finishes).	
<b>Part # AST146</b>	<b>\$8,899</b>



<b>Aria Elite Bath</b> 30 air jets, heated air blower, Chromatherapy using 2 LED lights, internal pre-leveled foam base and Toe-Tap drain kit in chrome (see Tub Options below for other finishes).	
<b>Part # AE146</b>	<b>\$9,999</b>

**NOTE:** Above jet placements for illustration only.

## TUB OPTIONS

- Colors  
 White (CWH) **This tub is currently only available in white.**

## ADDITIONAL THERAPIES

- Thermaltherapy: Radiance® (RAD100) (See p. D-3)
- Chromatherapy: Digitally controlled LED lighting (LE) (see p. D-5)

## ACCESSORIES & HARDWARE

- Floor-Mounted High-Flow Tub Filler (See p. D-17)
  - Chrome (FILLC)
  - Brushed Nickel (FILLBN)
- Drain & Overflow Kits (For other available finishes see p. D-10)
  - Note: overflow is installed at the factory, due to limited accessibility.
  - Toe-Tap - Chrome (WOTTC)
  - Toe-Tap - Brushed Nickel Upcharge (WOTTBN)
- Textured Non-Slip Bottom (TXTBTM) meets ASTM F-462-1994
- Pillows (see p. D-13)
  - Soft "Jelly Bean" Pillow (PIJB)
  - Lounge Pillow (PIL)

STD

\$999

\$499

\$1,987

\$2,218

STD

\$25

\$63

\$110

\$122

## OPTIONS INFORMATION

**Floor-Mounted High-Flow Tub Filler -**  
 Modern design. Blends with most manufacturer's contemporary design lavatory & shower faucets. Fill rate of 15 gallons per minute at 45 psi. Includes hand-held shower with independent valve. See page D-17 for detailed specifications.



## RECOMMENDED ADDITIONAL PRODUCTS

### Teak Accessories (See Sec. E)

- Teak Bath Mat (TK-MAT3018) (custom sizes also available)

\$329

