

### GENERAL SPECIFICATIONS:

<b>Tub Size</b>	72" x 42.25" x 26"
<b>Bathing Well</b>	length: 57.75" top / 44" bottom width: 30.5" top / 27" bottom depth at overflow: 17"
<b>Soaker Weight</b>	185 lbs / 83.91 kg
<b>Maximum Fill</b>	103 gal to overflow
<b>Undermountable</b>	No

NOTE: Filling this tub to the maximum may require an above average size or dedicated water heater.

NOTE: Not recommended as a tub / shower combination.

### ELECTRICAL SPECIFICATIONS:

<b>Required Electrical Service</b>	110 Volt
<b>Air Bath</b>	1-15 amp GFCI

CSA Certified C/US; NAHB Certified; ANSI Z124.1 for plastic tubs and ANSI 112.19.7 for whirlpool components.

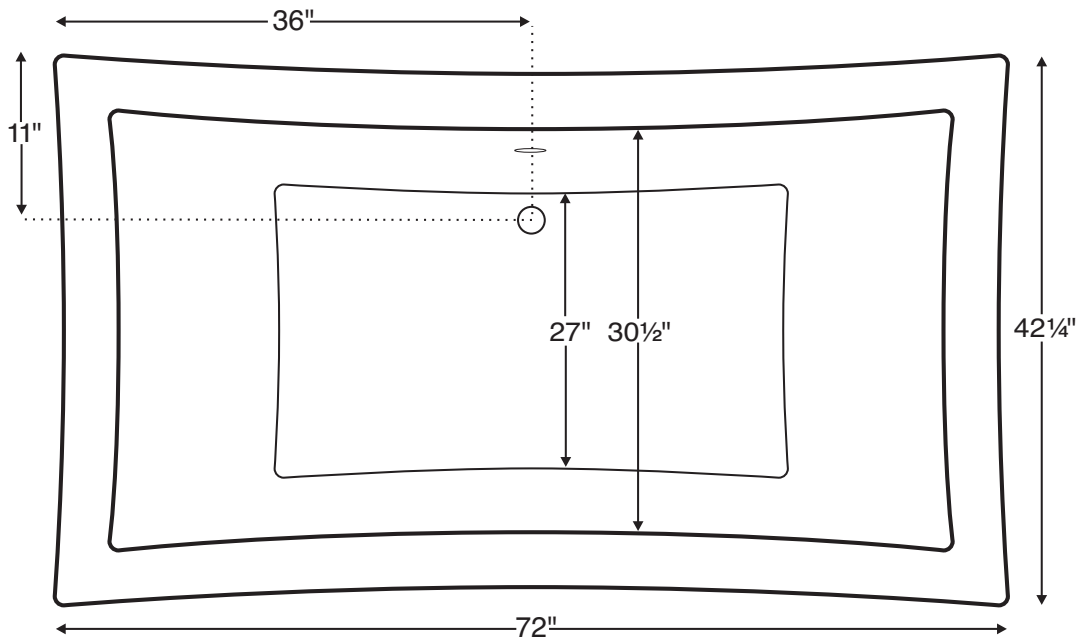
NOTE: See electrical specifications page for electrical requirements of options.

# Sapelo MTDS-82

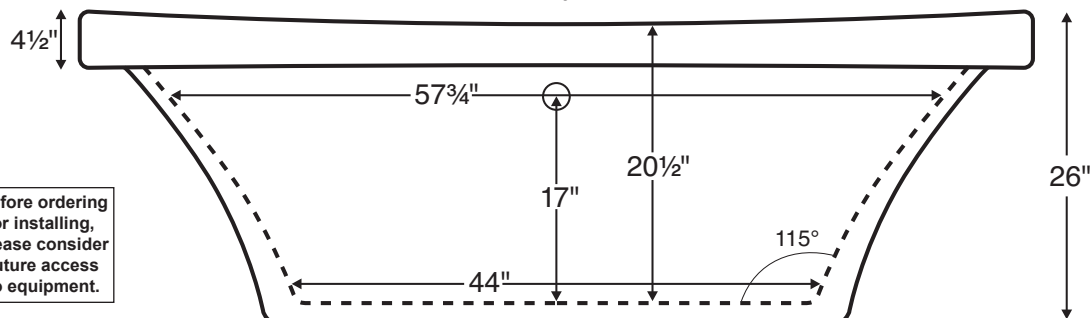
72" x 42.25" x 26"



Freestanding Tub



Most MTI freestanding tubs use wall-mounted or freestanding faucets. The waste and overflow assembly is concealed between the walls of the tub, eliminating the need for a decorative exposed drain kit.



Before ordering or installing, please consider future access to equipment.

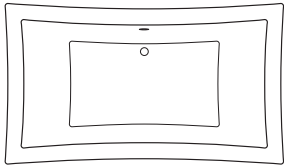

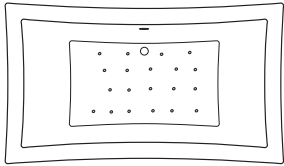
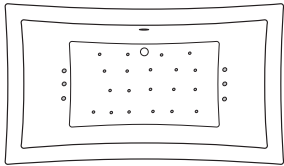
Measurements are  $\pm 1/2$ " and are subject to change without notice.  
Data herein supersedes all previous prior to publication date shown below.



# Sapelo MTDS-82

72" x 42.25" x 26"

All packages with air bath include a timer for added safety..

Soaker	Soaker (S82)		
	Soaker with internal pre-leveled foam base		<p><b>Note:</b> This freestanding tub comes equipped with an access panel on the drain side for installation of waste and overflow. <b>IF</b> the tub will be viewable from all angles, MTI will upon request eliminate the access panel. Please note, installation will be slightly more difficult.</p> <p><b>Tub with access panel.</b></p>  <p><b>Rear view.</b></p>
	<b>\$4,181</b>		
System Aria	Air Bath (AST82)		
	20 air jets, heated blower and internal pre-leveled foam base		
	<b>\$6,179</b>		
System Aria Elite	Aria Elite Bath (AE82)		
	20 air jets, six 7-port lateral jets (42 air streams), heated blower, 2 LED lights and internal pre-leveled foam base		
	<b>\$7,507</b>		

## COLORS

**Standard:** White, Biscuit, Almond

**Color Upgrade:** See p M-1 for available colors

## OPTIONS FOR ALL BATHS (See Section C for details)

• Quick Ship/Priority. Call for availability. (QSPRI)	\$260
• Remote Control (REMOTE) (Air Bath packages only)	\$295
• Radiance® (RAD100) (See p C-23)	\$999
• Stereo H2O® with 2 transducers (STEREOH2O2) (See p C-20)	\$1,559
• Virtual Spout (FPMJ) (See p C-25)	N/A
• Inline Heater Installed / Soaker and Air Bath (HTISOAK)	N/A
• Tub Shield Frameless Enclosure Chrome	N/A
Square Hinges (MXSH24C) Oval Hinges (QXSH24C)	N/A
Other finishes available (See p K-13)	N/A
• Acrylic Grab Bars, Curved 9" (set of 2)	N/A
White (GBCW); Bone (GBCB); Almond (GBCAL);	
Biscuit (GBCBS); Clear w/ Chrome Accents (GBCAC)	
Clear w/ Brass Accents (GBCBAC)	
Clear w/ Brushed Nickel Accents (GBCAB)	
• Metal Grab Bars, Modern Straight 9" (set of 2)	N/A
Chrome (GBMS9C); Brushed Nickel (GBMS9BN)	
Polished Nickel (GBMS9PN)	
• Metal Grab Bars, Curved 9" (set of 2)	N/A
Chrome (GBMCC); Brushed Nickel (GBMCCBN);	
Polished Nickel (GBMCPN)	
• Waste & Overflow Kits (For other available finishes see p C-1)	
Lift & Turn White (WOW)	\$132
Lift & Turn Chrome (WOC)	\$86
Lift & Turn Brushed Nickel (WOBNI)	\$160
Cable Driven White, Bone, Biscuit, Almond (WOCWD)	\$213
Cable Driven Chrome (WOCDB)	\$224
Cable Driven Brass (WOCDBR)	\$300
Cable Driven Oil Rubbed Bronze (WOCDOB)	\$300
Cable Driven Brushed Nickel (WOCDBN)	\$280
Cable Driven Polished Nickel (WOCDBPN)	\$324
Toe-Tap Chrome (WOTTC)	\$162
Toe-Tap Brushed Nickel (WOTTCBN)	\$184
• Decorative Towel Bar Chrome (CHTOWEL)	N/A
• Decorative Towel Bar Brushed Nickel (BNTOWEL)	N/A
• Blower Box: Oak (BBOAK); Cherry (BBCH); Maple (BMAP)	\$616
• Textured Non-Slip Bottom (TXTBTM) meets ASTM F-462-1994	\$63
• Chromatherapy: digitally controlled LED lighting (LE)	\$499
• Pillows: various shapes and sizes	See p C-12
• Hand-Held Showers, factory-installed	N/A

• Integral Tile Flange 3 sides (ITF) Specify RH or LH Drain	N/A
• Tile Flange Kit Factory-Installed 3 sides – Rigid ABS (TFK3)	N/A
• Tile Flange Kit Field-Installed 3 sides – Rigid ABS (TFKNI)	N/A
• Pre-Leveled Foam Base (PLFOAM)	STD
• Pre-Leveled Frame and Foam Base (PLF)	N/A
• Skirting w/Tub	
Paintable Wood Skirt (SKW6)	N/A
Stainable Wood Skirt / Cherry (SKCH6)	N/A
Stainable Wood Skirt / Oak or Maple (SKO6)	N/A
One-Piece Traditional Acrylic Raised Panel (SKAO6)	N/A
Acrylic Raised Panel-Look w/ Removable Panels (SKAR6)	N/A
One-Piece Contemporary Acrylic Flat Panel (SKFO6)	N/A
Acrylic Euro-Style w/ Removable Panels (SKE6)	N/A
Acrylic Skirting Color Upgrade (See p M-1)	N/A

