

ATELIER MTS-504



*Flush-Mount Installation Kit required for installation.

• FEATURES

16 gauge type 304 stainless steel
Tri-mount™ installation system
*FLUSH - MOUNTABLE

• TECHNICAL INFORMATION

External dimensions (L x W x D): 33" x 18" x 10"
Basin dimensions (L x W x D): 30" x 15" x 10"
Frame width: 1-1/2"
Frame thickness: 1/4"

• FINISHES

Brushed stainless steel (B)

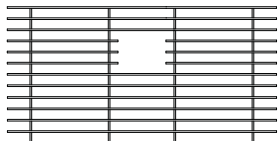
• INSTALLATION OPTIONS

Flush-mount (MTK-105 is required)
Top-mount
Under-mount

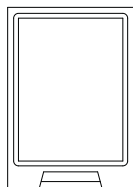
• MINIMUM CABINET SIZE (I.D.)

| | |
|-------------|-----|
| Flush-mount | 35" |
| Top-mount | 34" |
| Under-mount | 35" |

• ACCESSORY OPTIONS



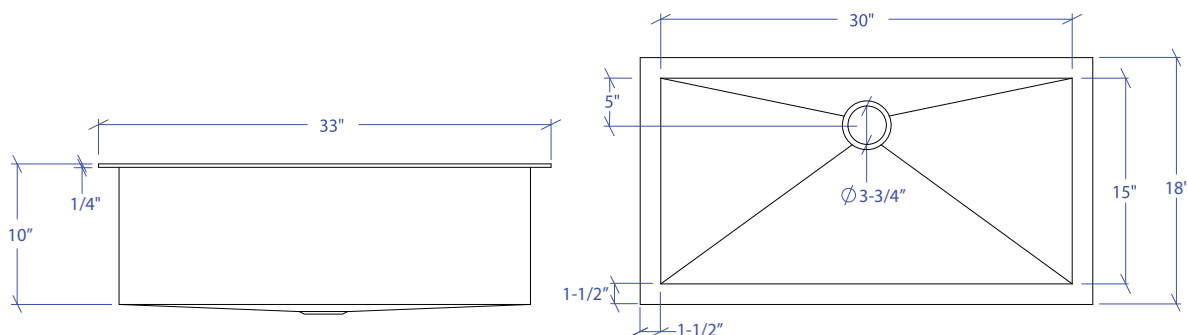
MBG-056
Basin Grid



MCB-501
Cutting Board

• INDUSTRY'S ONLY STAINLESS STEEL SINK DESIGNED SPECIFICALLY TO BE FLUSH-MOUNTED

• PATENT PENDING



TRI-MOUNT™