



# LEFROY BROOKS

1 8 2 8 T R O U T M A N S T R E E T  
R I D G E W O O D N E W Y O R K N Y 1 1 3 8 5 U S A  
T: +1(718) 302 5292 F: +1(718) 302 4177

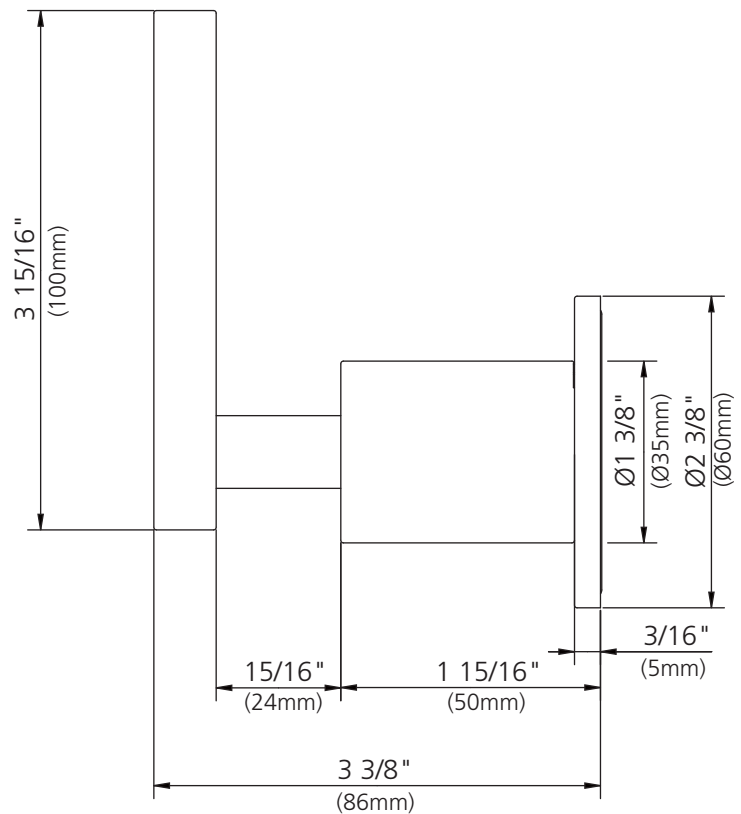
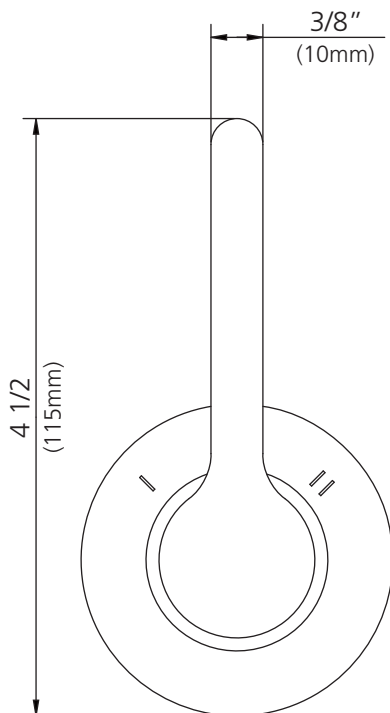
## DIMENSIONAL DATA SHEET

DATE: 30 June 2011

No: A66F096

### K1-1011

TWO-WAY LEVER WALL DIVERTER TRIM ONLY, TO SUIT R1-4000  
ROUGH.

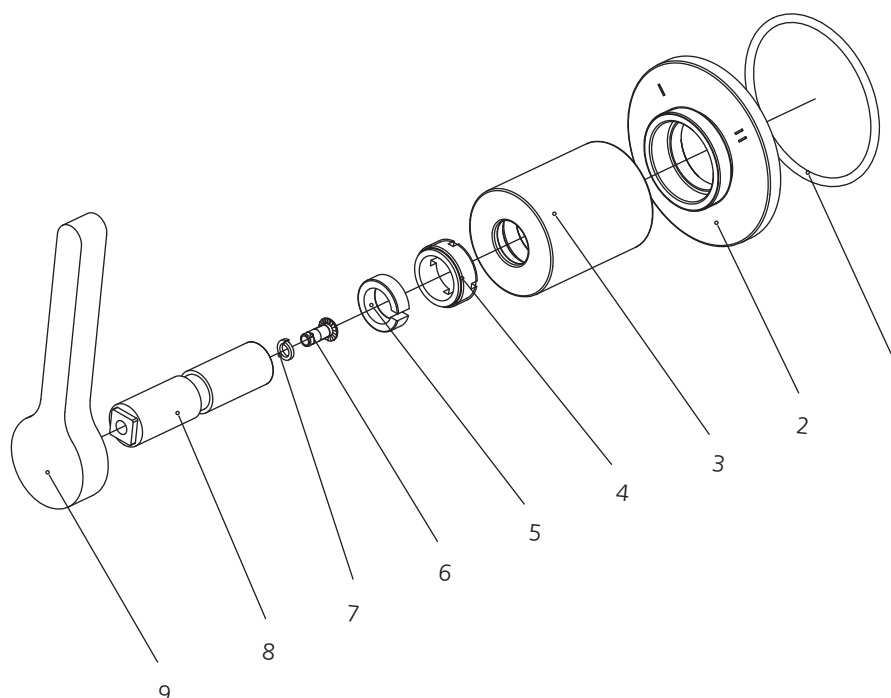


DIMENSIONS IN INCHES & MILLIMETRES

WHILST EVERY EFFORT IS MADE TO ENSURE THE ACCURACY OF THESE DATA SHEETS THEY ARE SUBJECT TO CHANGE WITHOUT NOTICE AS PART OF THE COMPANY'S PRODUCT DEVELOPMENT PROCESS

# K1-1011

TWO-WAY LEVER WALL DIVERTER TRIM ONLY, TO SUIT R1-4000  
ROUGH.



- |   |                        |   |                  |
|---|------------------------|---|------------------|
| 1 | O-ring (048062)        | 6 | Screw (008154)   |
| 2 | Escutcheon (071344-50) | 7 | Washer (013570)  |
| 3 | Canopy (018438)        | 8 | Adaptor (067239) |
| 4 | Adaptor(057507)        | 9 | Handle (069699)  |
| 5 | Clip (012242)          |   |                  |

## Standards

IAPMO/cUPC Listed  
Meets A112.18.1  
ADA Compliant

Please note :

Final achievable flow rate is dependent on the outlets fitted, see relevant outlets (spouts, roses, sprays) for fully assembled product flow rate.