



LEFROY BROOKS

1 8 2 8 T R O U T M A N S T R E E T
R I D G E W O O D N E W Y O R K N Y 1 1 3 8 5 U S A
T: +1(718) 302 5292 F: +1(718) 302 4177

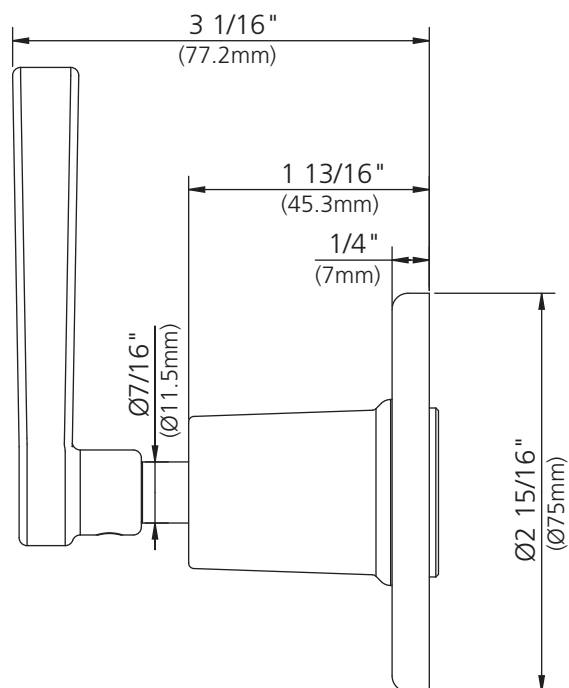
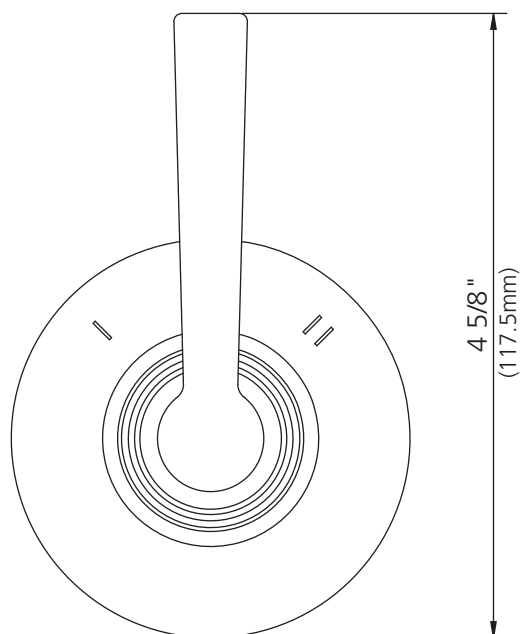
DIMENSIONAL DATA SHEET

DATE: 13 January 2011

No: A66F099

M1-1011

LEVER TWO-WAY WALL DIVERTER TRIM ONLY,
TO SUIT R1-4000 ROUGH

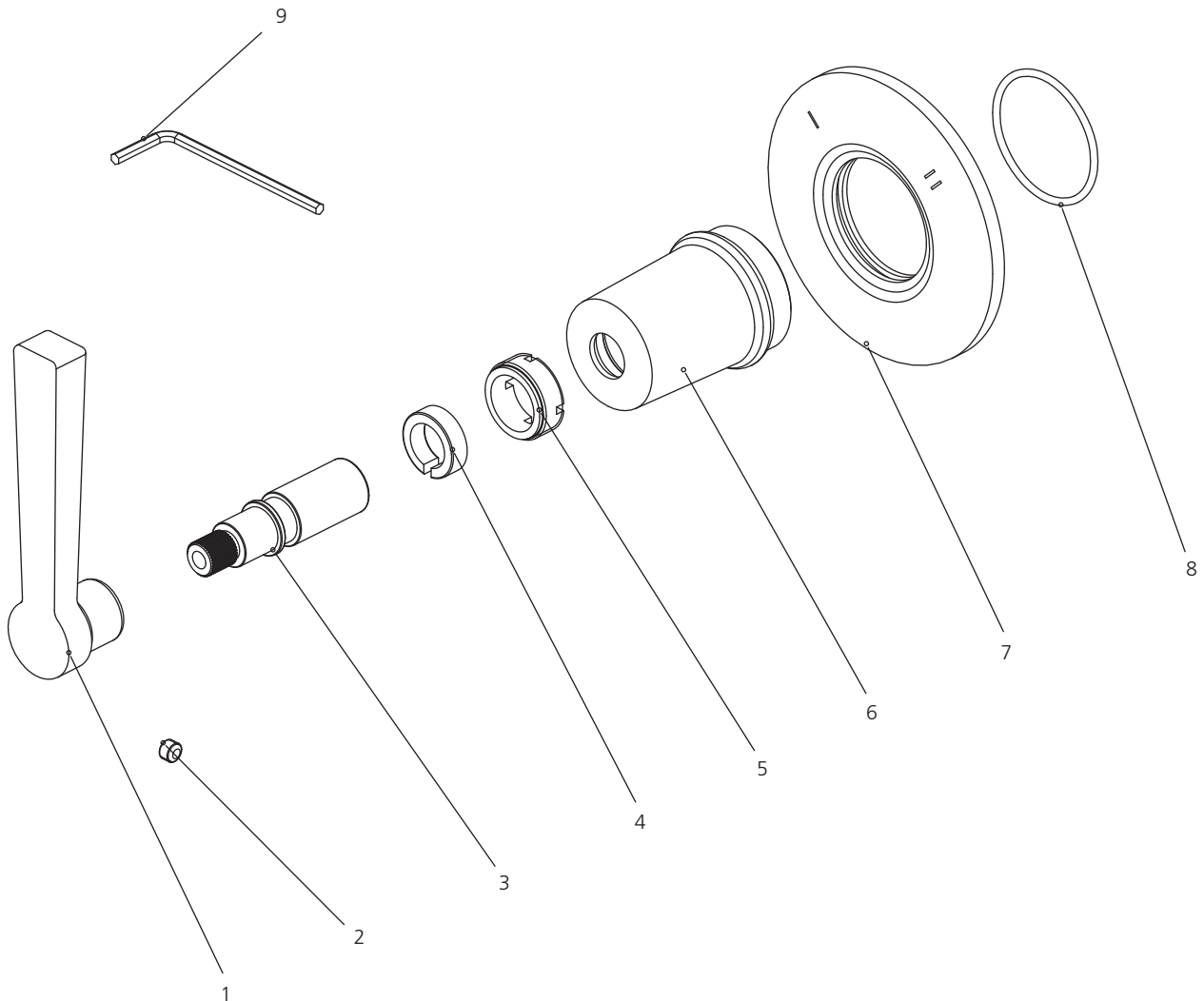


DIMENSIONS IN INCHES & MILLIMETRES

WHILST EVERY EFFORT IS MADE TO ENSURE THE ACCURACY OF THESE DATA SHEETS THEY ARE SUBJECT TO CHANGE WITHOUT NOTICE AS PART OF THE COMPANY'S PRODUCT DEVELOPMENT PROCESS

M1-1011

LEVER TWO-WAY WALL DIVERTER TRIM ONLY, TO SUIT R1-4000 ROUGH



- 1 Handle (029686)
- 2 Set screw (292598)
- 3 Adaptor (067773)
- 4 Clip (012242)
- 5 Adaptor (057507)

- 6 Canopy (018014)
- 7 Escutcheon (071466-50)
- 8 O-ring (063062)
- 9 Allen key (031000)

Standards

IAPMO/cUPC Listed
Meets A112.18.1
ADA Compliant

Please note :

Final achievable flow rate is dependent on the outlets fitted, see relevant outlets (spouts, roses, sprays) for fully assembled product flow rate.