



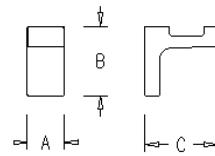
ROBE HOOK

REFERENCE	FINISH
8423561 113880	SATIN NICKEL
8423561 113866	CHROME
8423561 113873	SATIN CHROME

A: 1,06" B: 1,97" C: 2,09"

LOGISTIC DATE

WEIGHT	0,15 kg
UNIDAD DE EMBALAJE	20
ITEMS PER PALLET	1600



Sonia Accessories are manufactured in die casting and machined brass.

The quality is not only a result of the raw material used but also relies on the finishing touch.

The coating is the process which grants corrosion resistance: chrome, sated chrome, satin nickel.... The thickness of our items certifies a long lasting product.

·ISO 3497	Plating thickness
·EN 248	Corrosion resistance
·DIN 50021	Corrosion resistance
·ISO 9227	Corrosion resistance
·ISO 4541	Aggressive rusting test
·BS 1224	Plating adherence to termo schock test
·ISO 2819	Plating adherence to termo schock test
·UNE 12540	Plating adherence to termo schock test
·DIN 50021	Sectional plating adherence
·STD 865	Scratch resistance
·STD 857	Adherente to cross cut
·STD 2241	Moisture resistance
·STD 501	Resistance to chemicals

