



 **sonia**[®]

SOAP DISH

| REFERENCE | FINISH |
|-----------|--------|
|-----------|--------|

| | |
|----------------|--------------|
| 8423561 114085 | SATIN CHROME |
|----------------|--------------|

| | |
|----------------|--------------|
| 8423561 114092 | SATIN NICKEL |
|----------------|--------------|

| | |
|----------------|--------|
| 8423561 114078 | CHROME |
|----------------|--------|

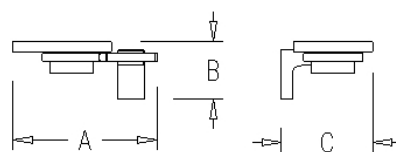
A: 5,79" B: 2,32" C: 3,66"

LOGISTIC DATE

| | |
|--------|---------|
| WEIGHT | 0,54 kg |
|--------|---------|

| | |
|--------------------|---|
| UNIDAD DE EMBALAJE | 8 |
|--------------------|---|

| | |
|------------------|-----|
| ITEMS PER PALLET | 224 |
|------------------|-----|



Sonia Accessories are manufactured in die casting and machined brass.

The quality is not only a result of the raw material used but also relies on the finishing touch.

The coating is the process which grants corrosion resistance: chrome, sated chrome, satin nickel.... The thickness of our items certifies a long lasting product.

| | |
|------------|--|
| ·ISO 3497 | Plating thickness |
| ·EN 248 | Corrosion resistance |
| ·DIN 50021 | Corrosion resistance |
| ·ISO 9227 | Corrosion resistance |
| ·ISO 4541 | Aggressive rusting test |
| ·BS 1224 | Plating adherence to termo schock test |
| ·ISO 2819 | Plating adherence to termo schock test |
| ·UNE 12540 | Plating adherence to termo schock test |
| ·DIN 50021 | Sectional plating adherence |
| ·STD 865 | Scratch resistance |
| ·STD 857 | Adherente to cross cut |
| ·STD 2241 | Moisture resistance |
| ·STD 501 | Resistance to chemicals |

