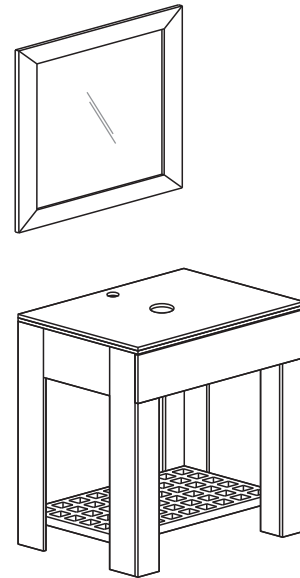


WC-MB1000-30"

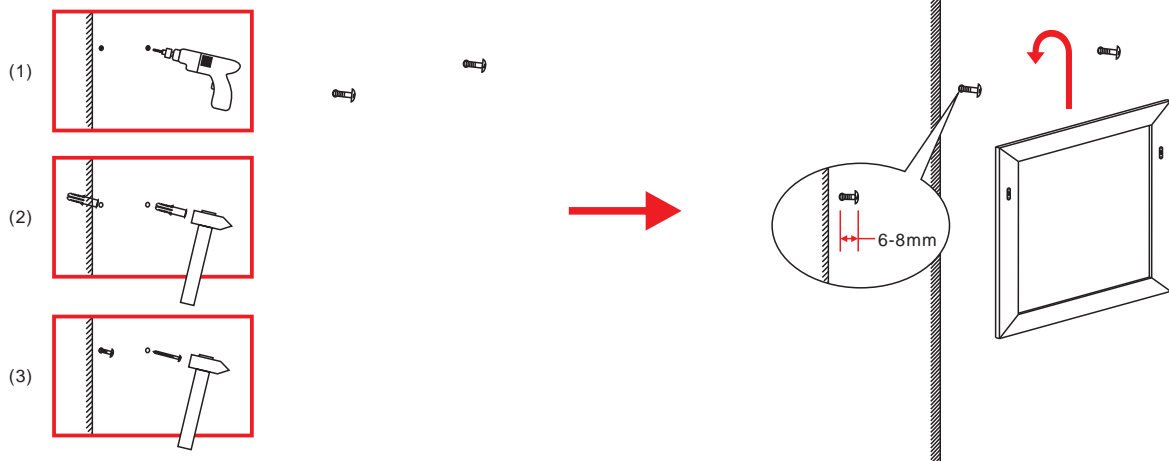
Installation Instructions



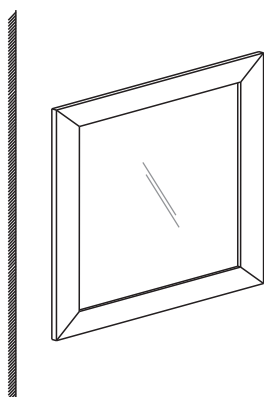
Mirror Assembly

Measure the distance between the hangers and mark drill positions on the wall. Drill into wall. Install wall anchors and screw in hanging screws. Hang the mirror.

1



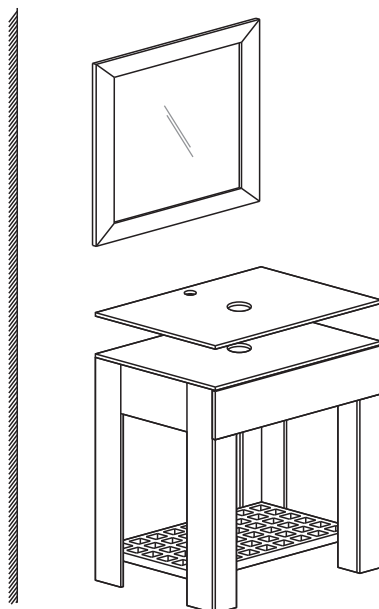
2



Cabinet Assembly

During installation, please be careful with tools to avoid scratching the product or surroundings.

- 1) Stand the cabinet against the wall and check the plumbing position. Adjust as needed.
- 2) Put the glass counter on the cabinet, center and align it. Put on the sink.



Drain Assembly:

- ◆ Connect trap to drain assembly as shown. Hand tighten and check for alignment. It may be necessary to cut off part of the vertical or the horizontal pipe in order to align properly with existing plumbing.

- ◆ Install P-trap ensuring all the gaskets are in place and tighten carefully.

- 1 Basin
- 2 Pop-up
- 3 Top gasket
- 4 Bottom lip gasket
- 5 Gasket
- 6 Washer
- 7 Bottom gasket
- 8 Drain nut
- 9 Rubber pipe
- 10 Tail piece
- 11 Drain lid

